

ALL STAINLESS STEEL PRESSURE GAUGE WITH CAPSULE ELEMENT



Nominal size 63, 100, 160

Connection position radial bottom, centric or eccentric back



Description

The pressure gauges with capsule element are used to measure small negative or positive gauge pressure in gaseous media. The capsule element consists of two diaphragm element halves soldered together. When subjected to pressure from within, the diaphragm element expands by a precise amount. This expansion is converted by a movement into the rotary motion of the pointer.

All stainless steel pressure gauges for chemical industry with capsule type element are manufactured using high quality stainless steel and are therefore suitable for use with aggressive or corrosive gases.

The gauges can be supplied with a rear mounting bracket, cover ring, triangular front ring or front mounting flange as required for the installation conditions.

Features

- Use in mabr range
- Corrosion resistant
- Zero-point adjustment
- Application up to the end of scale value


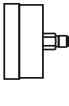

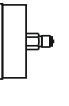

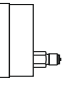
Ranges

0 ... 2,5 mbar up to 0 ... 600 mbar

Applications

Pharmaceutical industry
Air conditioning
Leakage tests
Filter and status monitoring
Exhaust measurements
Gas generation
Container content measurement
Laboratory applications

Technical information

Type	6080	6081	6086	6087	6088	6089	Options
Diameter	63		100		160		NS 250 = Type 6090 (not fillable)
Symbol Connection position							Type 6089 connection centric back
Accuracy class	1,6 according to DIN EN 837-3						Higher class on request
Ranges	0...25 mbar up to 0...600 mbar		0...2,5 mbar up to 0...600 mbar		0...2,5 mbar up to 0...600 mbar		0...1000 mbar
	negative and/or positive overpressure						
Case	CrNi-steel 1.4301 with bayonet						Case parts 1.4404 (316L) on request
Connection	G¼B		G½B		G½B		Others on request (NPT, M20x1,5...)
Wetted parts	CrNi-steel 316 SS, O-ring-sealing FPM						
Window	Laminated safety glass						
Dial	Aluminium, white, scale and printing black						Special scales, red mark
Pointer	Aluminium, black						
Zero-point adjustment	Frontsided						
Storage temperature	-40°C up to +70°C; -20°C up to +70°C (glycerine filling)						
Area temperature	-40°C up to +60°C; -20°C up to +60°C (glycerine filling)						
Medium temperature	unfilled: max. 100°C, filled max. 70°C						Higher temp. on request
Temperature drift	up to 0,6 % /10K deviation of normal temperature 20°C						
Protection (unfilled version)	IP44		IP54				Others on request

More options:

ATEX-version



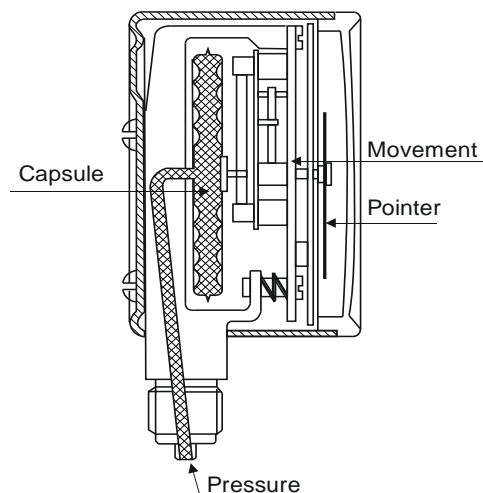
Restrictor screw in pressure inlet port

Back flange

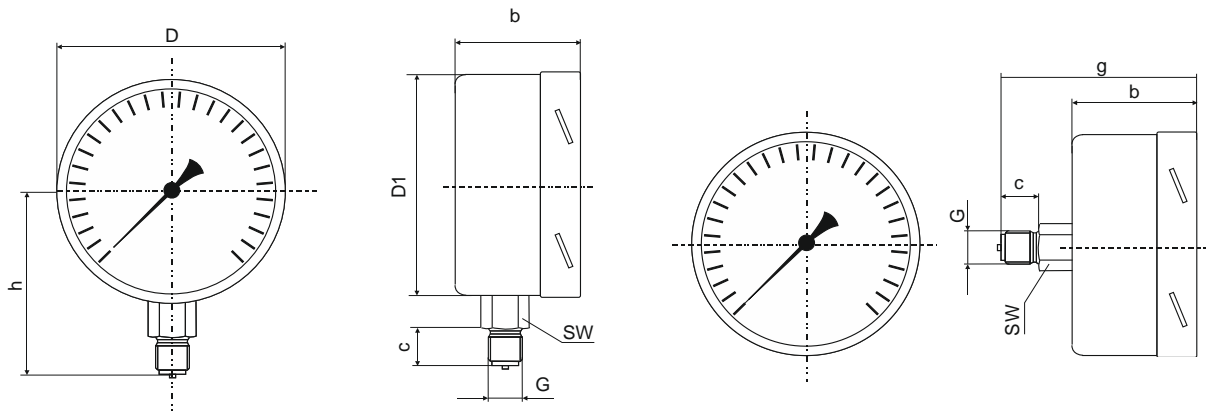
Front flange

U-clamp

Schematic representation:

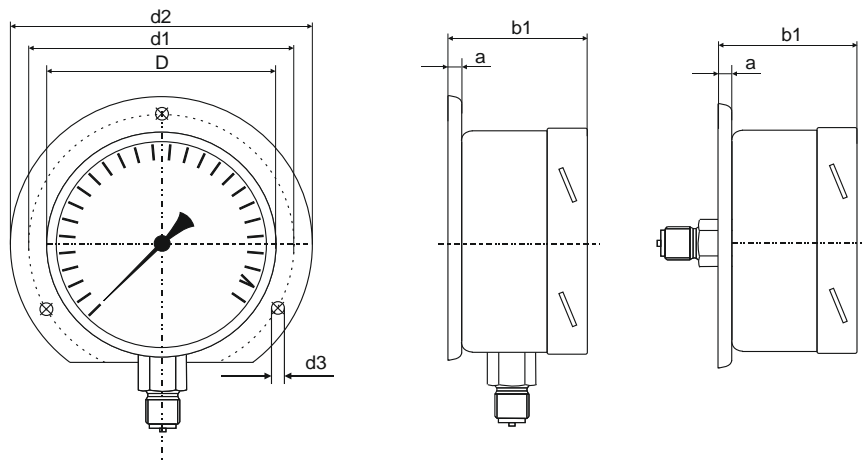


Dimensional drawings Dimensions in mm



with back flange for surface mounting

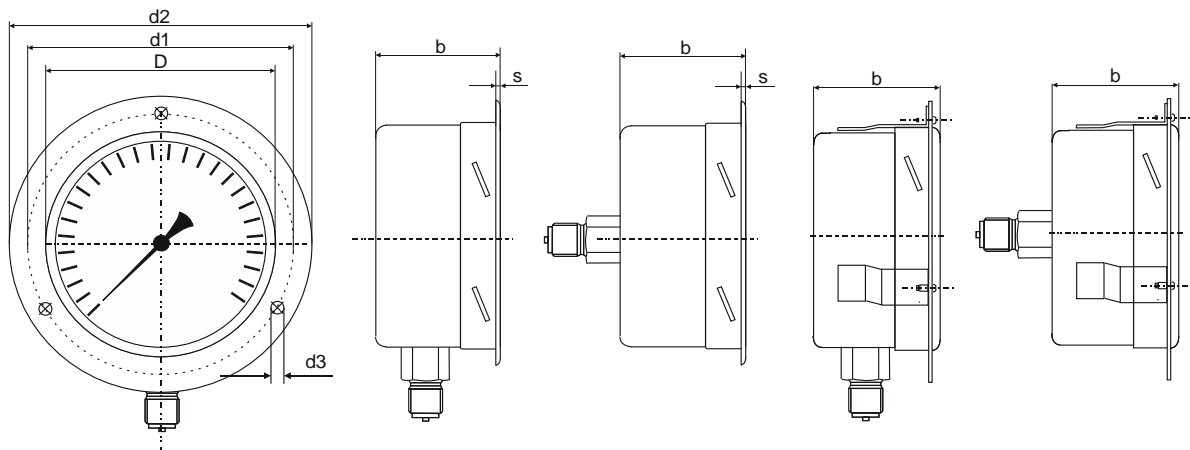
NG 160 Standard:
Anschluß hinten exzentrisch



Back flange for gauges with back connection not recommended acc.to EN 837-3

with front flange for panel mounting

U-clamp



Front flange for gauges with bottom connection not recommended acc.to EN 837-3

Dimensions (unfilled versions)

Type	NS	D	D1	h	G	SW	b	b1	c	g	d1	d2	d3	s
6080	63	64	62	54	G¼B	14	38	41	13	-	75	85	3,6	5
6081	63	64	62	-	G¼B	14	37	40	13	60	75	85	3,6	5
6086	100	101	99	87	G½B	22	55	59	20	-	116	132	4,8	6
6087	100	101	99	-	G½B	22	55	59	20	85	116	132	4,8	6
6088	160	161	159	115	G½B	22	55	58	20	-	178	196	5,8	6
6089	160	161	159	-	G½B	22	55	58	20	85	178	196	5,8	6
6090	250	251	249	165	G½B	22	58	60	20	-	270	285	5,8	6